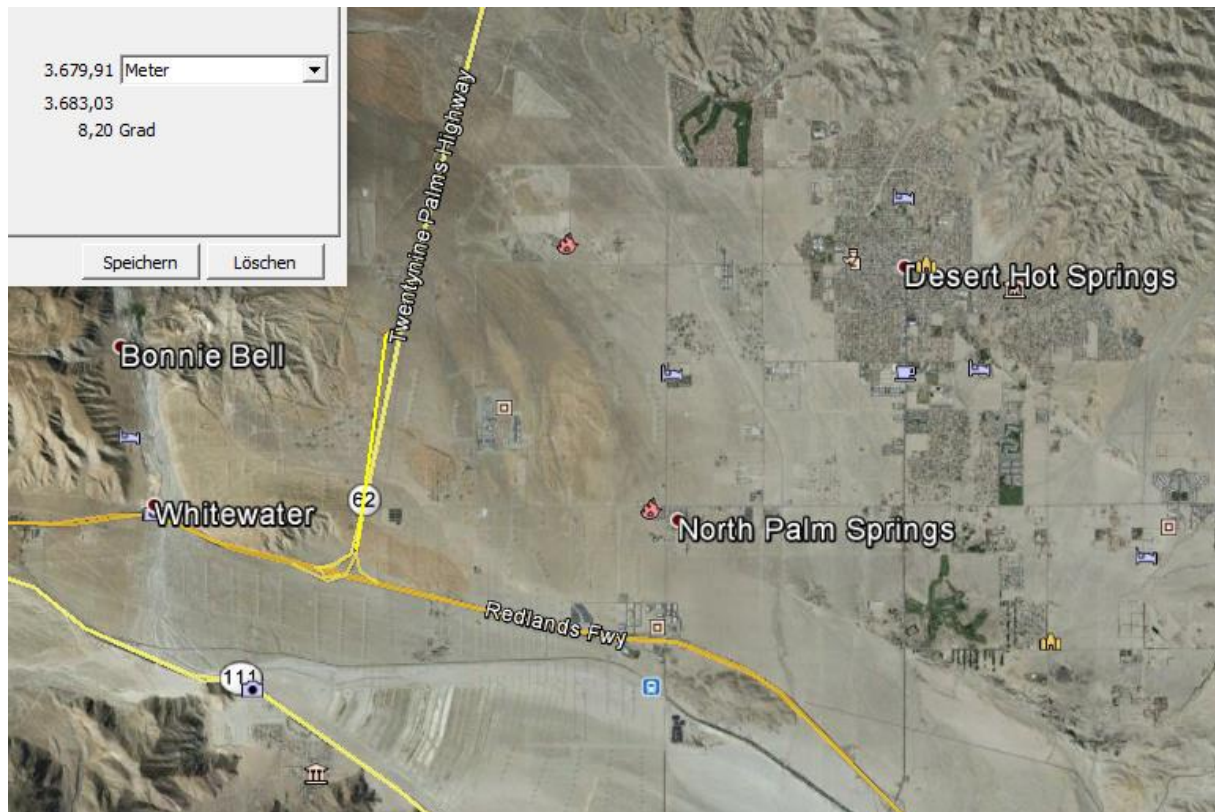


**Palm Springs 24.10.16,**

**Bus fährt auf LKW auf, M 59, 05.20 Sonntagmorgen,  
dunkel**



Associated Press in Desert Hot Springs

Monday 24 October 2016 02.42 BST

A tour bus and a semi-truck crashed on a highway in southern California early on Sunday, killing 13 people, the [California](#) highway patrol said.

A maintenance crew had slowed down traffic on Interstate 10 before the vehicles crashed just north of the desert resort town of Palm Springs, California highway patrol border division chief Jim Abele said. The work had gone on for hours without problems, he said.

Abele said the bus, which was carrying 44 passengers to Los Angeles from the Red Earth Casino in Thermal, California, was going much faster than the truck.

“The speed of bus was so significant that the trailer itself entered about 15 feet into the bus,” Abele told reporters. “You can see it was a substantial impact.”

It was not known if alcohol, drugs or fatigue played a role in the crash about 100 miles east of Los Angeles, but the bus was inspected in April and had no mechanical issues, Abele said.

The bus driver was killed, and the truck driver received minor injuries

Photographs showed the front of the bus pushed into the semi-truck's trailer after the wreck on Interstate 10 in Desert Hot Springs, near the resort town of Palm Springs.

Rescue workers used tow trucks to lift the trailer to provide easier access and pull the semi-truck forward, the Desert Sun newspaper reported.

At least 30 victims were taken to hospitals. Desert Regional Medical Center in Palm Springs received 14 patients: five in critical condition, three in serious condition and six with minor injuries, hospital director of marketing Rich Ramhoff said.

Eleven people with minor injuries were sent to Eisenhower Medical Center in Rancho Mirage, said spokesperson Lee Rice. JFK Medical Center in Indio received five patients, all with minor injuries, chief development officer Linda Evans said.

The cause of the crash was not yet known. The highway patrol said all westbound lanes of the highway were closed and traffic was being diverted. The driver of the bus was one of the owners of the tour company, Los Angeles-based USA Holiday.

The company has one vehicle and one driver, according to the Federal Motor Carrier Safety Administration. Records on the agency's website show the company had no crashes and one inspection in the two years before 22 October and had a satisfactory safety rating.

A phone and Facebook message left for the company was not immediately returned. Its Facebook page had postings about trips leaving the Los Angeles area to casinos around the Coachella Valley and Las Vegas.

Authorities have said that they may never know why a tour bus collided with a truck on a major highway in southern [California](#) because the driver was among 13 people killed in the crash.

Officials have not released the identities of any of the crash victims but neighbors have identified the bus driver as Elias Vides, 59, who also owns the tour company.

The bus was traveling west on Interstate 10 when it plowed into the back of a large truck early on Sunday. The freeway was closed for hours before it finally reopened at around 7pm this evening.

It was carrying 44 adult passengers from the Red Earth Casino in Salton City to Los Angeles when the crash was reported to the California Highway Patrol at 5.17am, CHP chief Jim Abele told a news conference on Sunday afternoon.

The Riverside County Coroner's Office confirmed 13 people aboard the bus died after the crash near Palm Springs in California's Mojave Desert. Others were left with horrific facial injuries as authorities believe that passengers were not wearing seat belts at the time.

The casualties include Rosa Alba Ruiz, a 53-year-old mother-of-three and grandmother from Los Angeles, while the family of Lester Pelaez, of Lancaster - who has been missing since the crash - were seeking answers at Riverside County coroner's office this evening.

Read more: <http://www.dailymail.co.uk/news/article-3864746/At-three-dead-horror-crash-tour-bus-collides-semi-truck-California-freeway.html#ixzz4O2Abiuju>

Follow us: [@MailOnline on Twitter](#) | [DailyMail on Facebook](#)



Schild 2 Miles bis zur Ausfahrt, somit Lage Höhe Solaranlagenfeld im Norden des highway 10





Ausgedehnte Windparks beidseits





Investigators confer at the scene of a mass casualty bus crash on the westbound Interstate 10 near Palm Springs, California. Photograph: Sam Mircovich/Reuters



Abschlepp-Vorgang startet.

Im Video ist zu sehen dass die meisten der Wind-Anlagen rundum in Betrieb sind.







**Ungefähre Stellung der Fahrzeuge bei Kollision, Strassenschild aus Unfallfotos**



Oben: Querung aus Parallelstrasse südwestlich

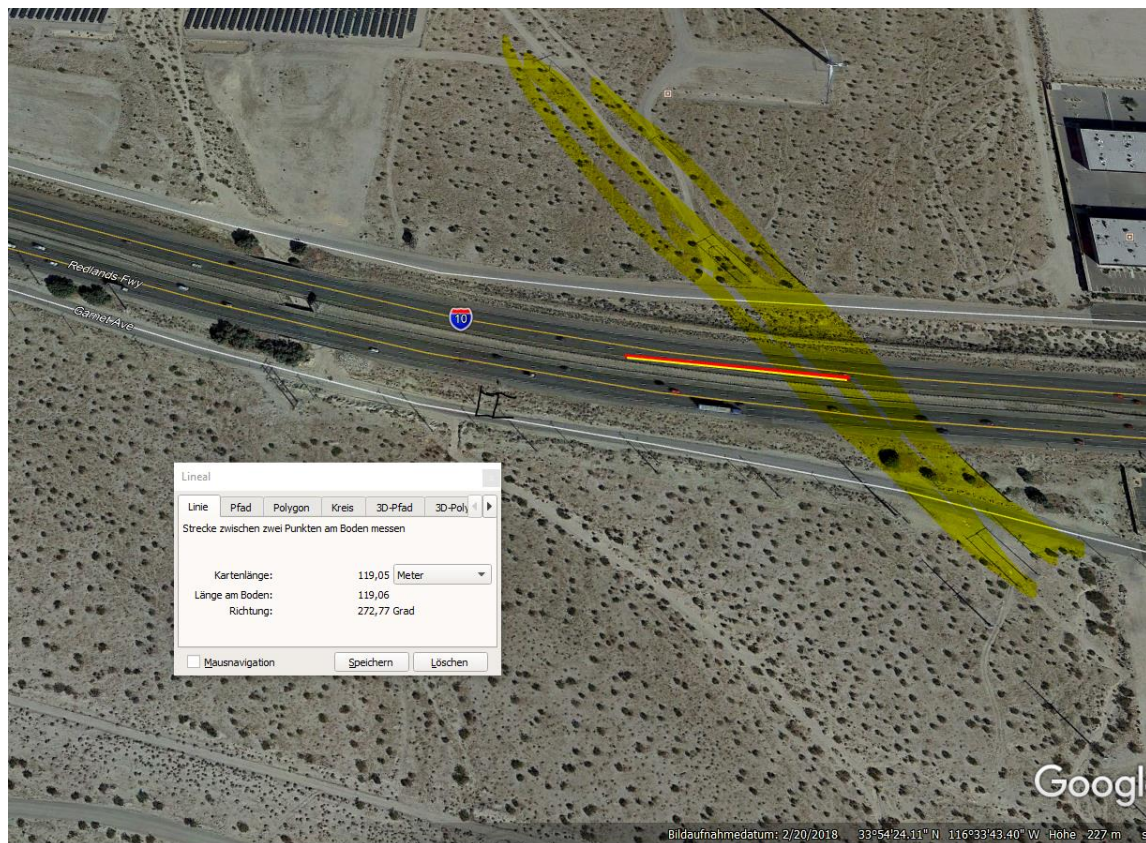
Unten: Querung aus Parallelstrasse südöstlich





Seit der Querung von Ebene 1 sind 120m, seit der Querung von Ebene 3 80m zurückgelegt.

**Am Ort, wo durch den Fahrer eine Wahrnehmung der Verzögerung im Verkehr hätte stattfinden sollen, waren sehr hohe elektromagnetische Felder.**



**Mobilfunk: in der Umgebung von 3 km keine Sender gefunden.**

**Wetter: war trocken, aufgrund der Bilder.**

Hansueli Stettler • Bauökologie • Funkmesstechnik • Lindenstrasse 132 • 9016 St.Gallen • [www.hansuelistettler.ch](http://www.hansuelistettler.ch) • [info@hansuelistettler.ch](mailto:info@hansuelistettler.ch)